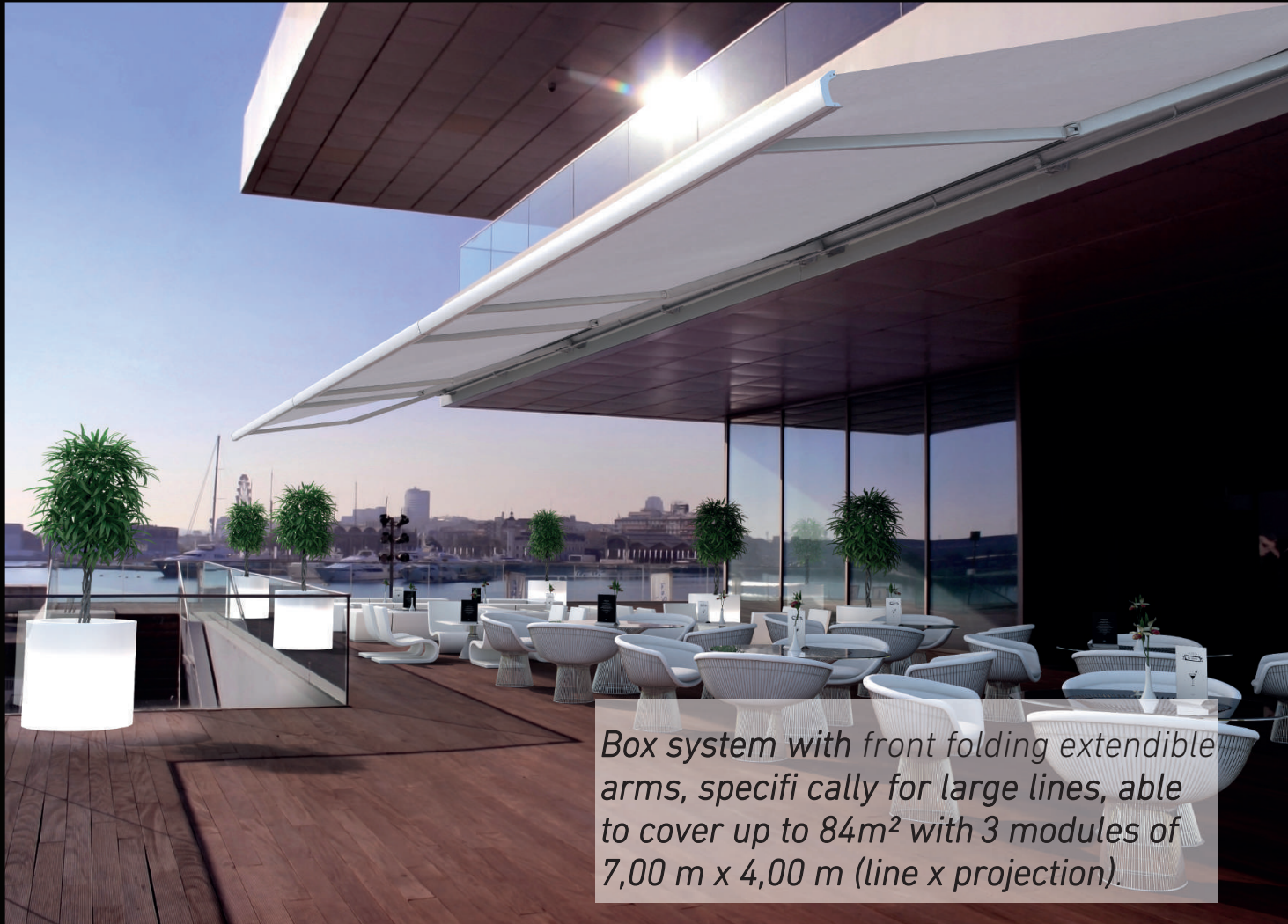


TechnoAwning-Max

The Oversized Motorized And Retractable Awnings

By TechnoShade



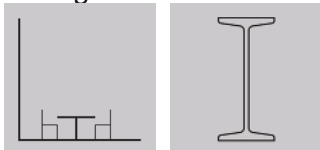
Box system with front folding extendible arms, specifically for large lines, able to cover up to 84m² with 3 modules of 7,00 m x 4,00 m (line x projection).



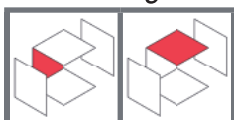
TechnoShade[®]
Natural Light Management™

Smart Window Solutions for Sustainable Architecture

Designed for installation in

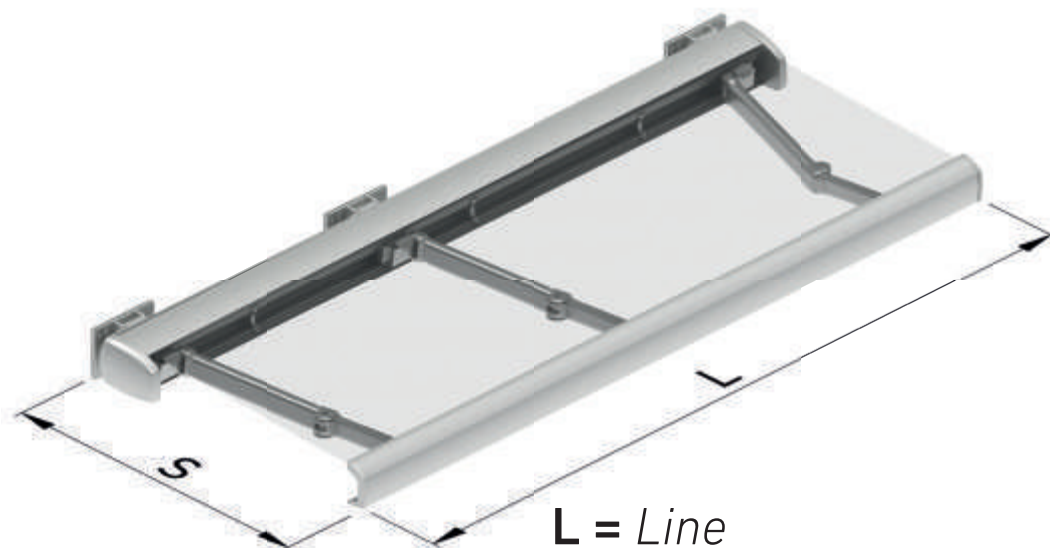


Fastening



Recommended for up to

7,00 line x 4 projection (m)	Up to 3 modules of 7.00 line (m)
------------------------------	----------------------------------



L = Line
S = Projection

Measurements in millimetres

Distinguished by

Articulated arm endowed with great resistance, prepared to channel electric cable from one end to the other hidden inside the same.

Double internal tension system.

Its installation gives great strength and resistance.

Mechanism and canvas protection when the awning is rolled up

Hiding of the mechanical fastening elements.

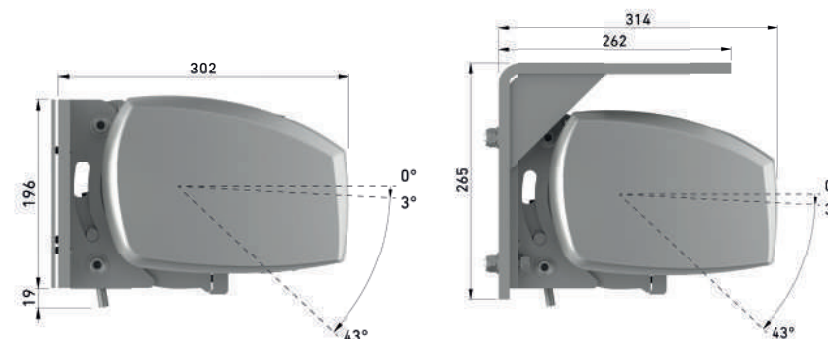
Great care in the design of all its components.

Easy to install.

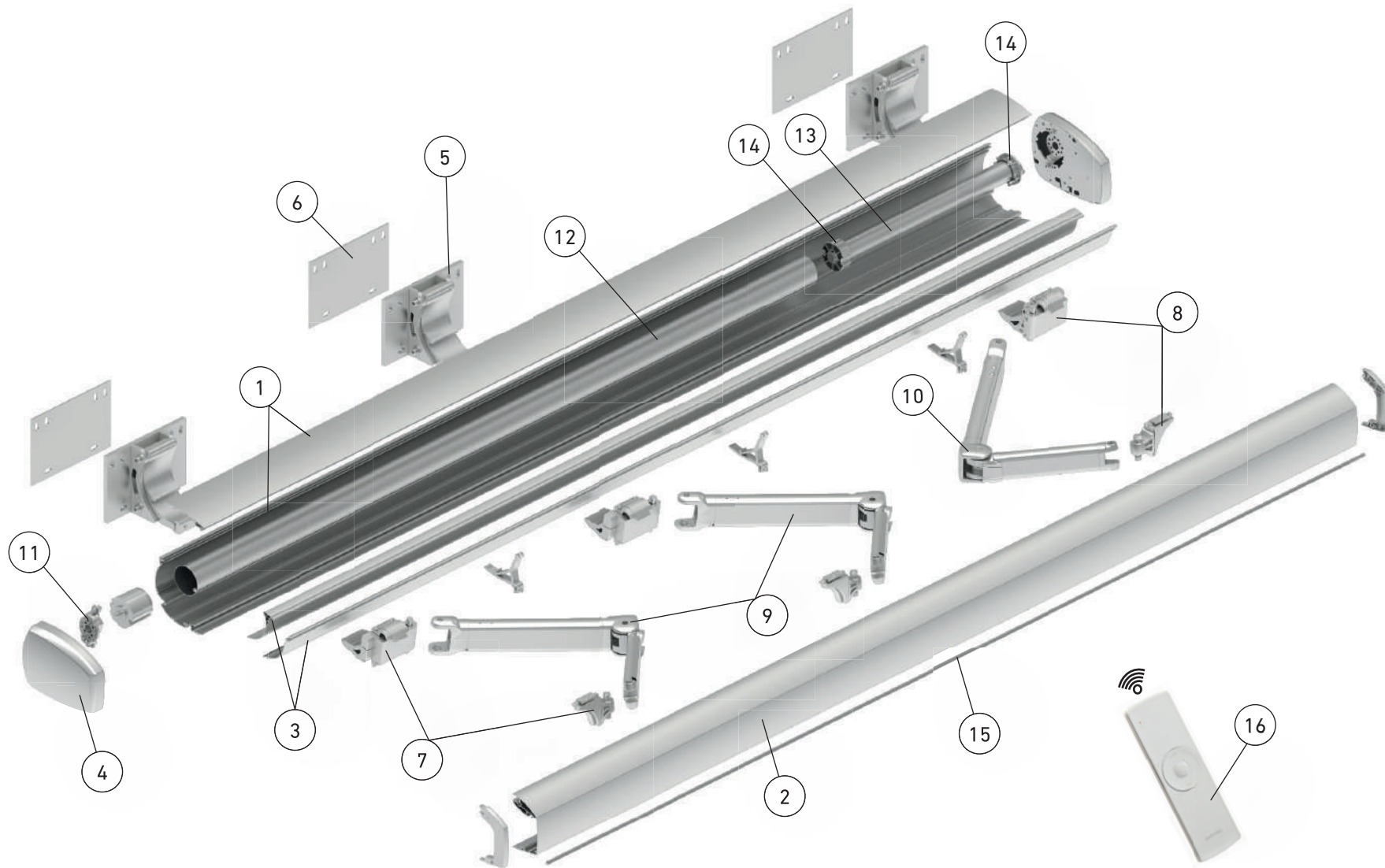
Being a multi-arm awning that can reach up to

21,00 m line with arms of 4,00 m.

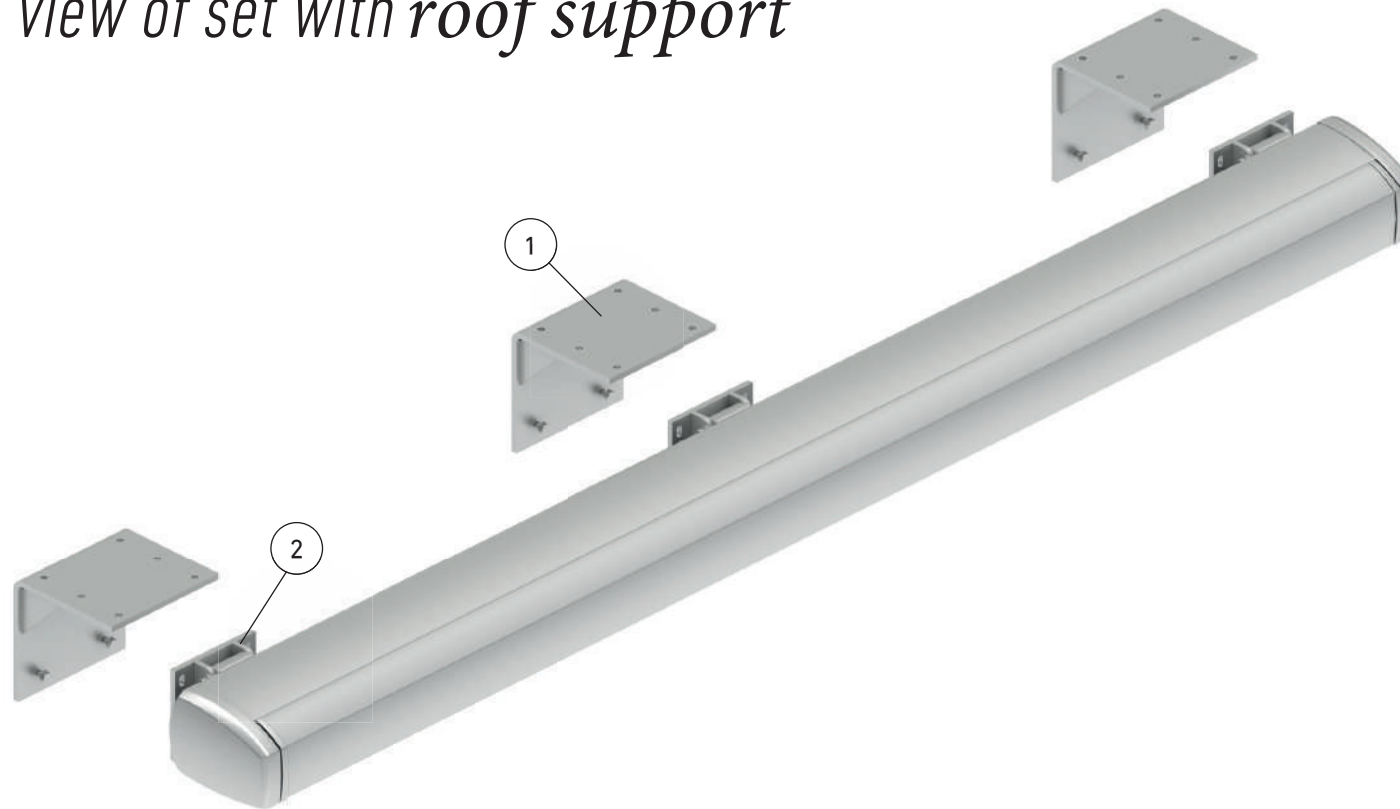
Dimensions



Exploded view of set with 3 arms



Exploded view of set with roof support



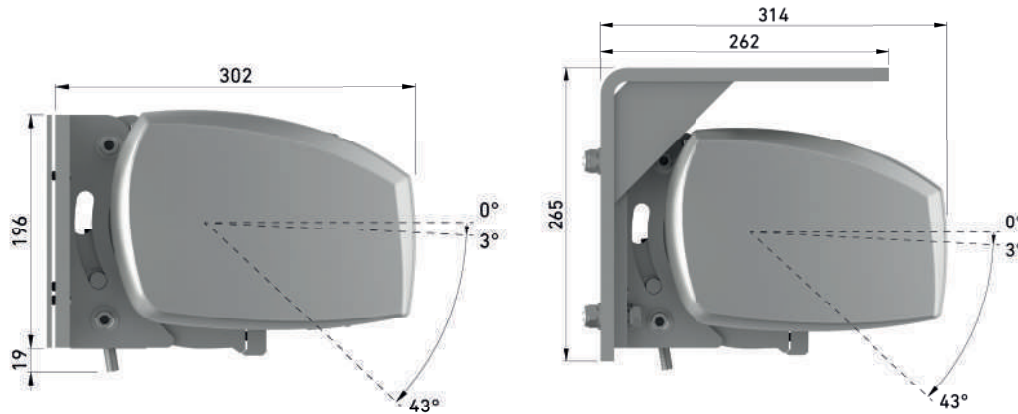
Example for mounting *TechnoAwning* to roof with motor and 3 arms, 7,00 m x 4,00 m (Line x Projection). White colour. Axis Ø85.

	Description	Quantity
①	<i>Box roof support</i>	3 ¹
②	<i>Box central support set</i>	3 ¹

¹ The same number will be used as arms the system has

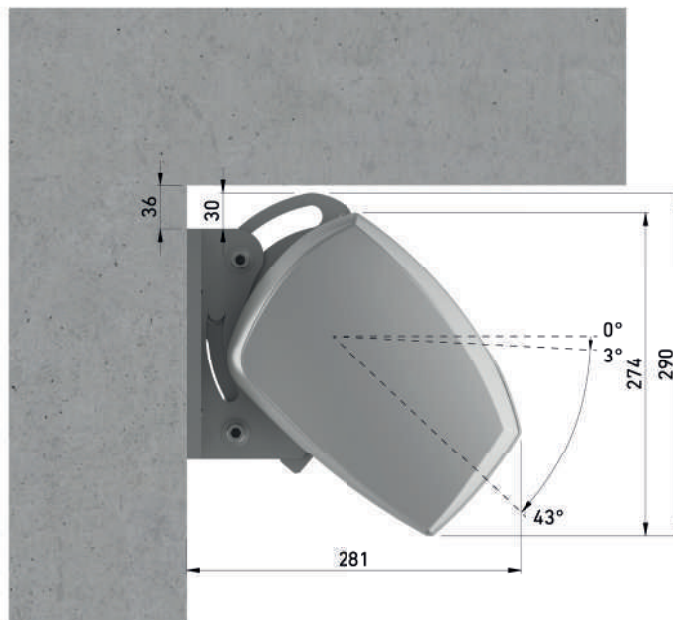
Slope angles

Option with and without valance



To the wall

To the roof



Minimum separation with roof

Measurements in millimetres

Recommendations

- Class 2 approved in 7,00 m line by 4,00 m projection with arms and central support, with 2 arms.
- Option to connect modules of up to 7,00 m each to a maximum of 3 (21 m line in total).
- Continuously adjustable from 3° up to 43° (measured from the horizontal level of the canvas).

Through an overall approach to Sustainable Development, combining “**bioclimatic principles**” with both comfort to the occupant and refined Architecture, TechnoShade is a leading company involved in ***Sustainable Architecture*** through providing a variety of ***Smart Window Solutions***.

Our **Automated** Roller Shades, our **Smart** Roller Shutters and our **Aesthetic** Awnings are all “**energy-efficient**” Architectural elements that are dedicated to form a “**dynamic façade**” and contribute in optimizing the energy performance of a building.

TechnoShade has a 20-year experienced team following up all the different phases of making a smart building: from preliminary design to execution details followed by implementation and configuration.

TechnoShade has contributed in the realization of many projects in different applications such as residential towers, hospitals, administrative buildings, universities, hotels, among them many are **LEED** certified.



Recyclable material

In Harmony With a Green Planet.



www.technoshade.com